

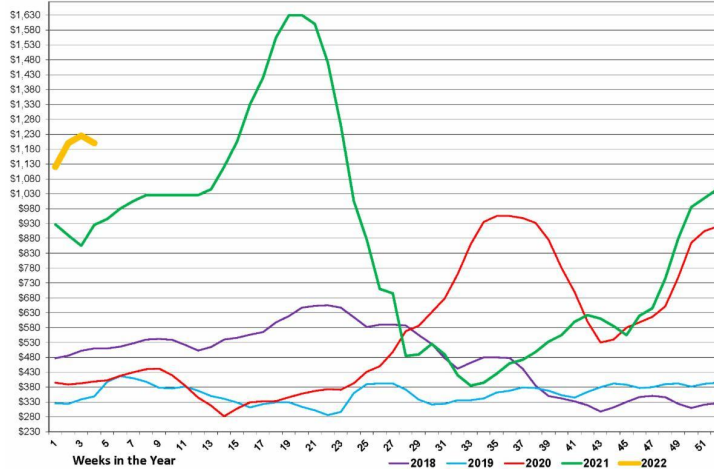


MARKET UPDATE - WEEK OF 1/31/2022

News & Events
DECK EXPO Feb 25, 2022
 Location - Ten Ninety Brewing Co
 1025 Waukegan Rd Glenview, IL 60025

DIMENSIONAL LUMBER

2X4 #2 Western Spruce



Pricing in this table is from mill to wholesale does not reflect local market pricing.

SPF

The market seems to have slowed down dramatically this week after a huge run since the middle of November. Mills are still relying on lengthy order files, with some out until the end of February or even the first week of March.

DOUGLAS FIR (DF)

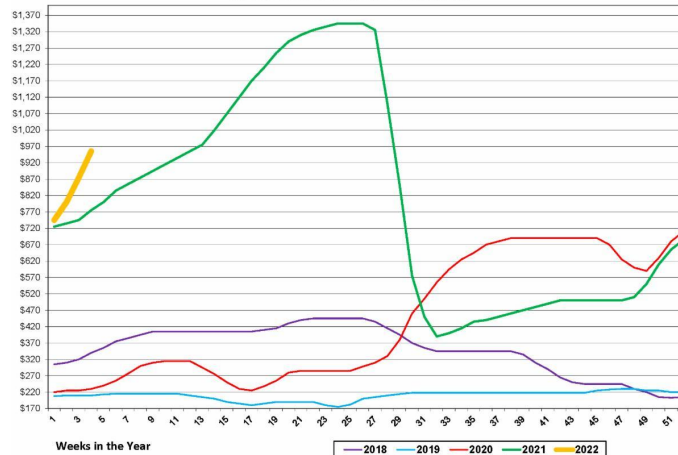
The market is currently in a pause. Most mills don't have much to sell. Long length lumber is a mess and will not improve anytime soon. Mills haven't had any availability on 22', 26', or 28' lengths in a few weeks and this is going to be a real problem once the supply chain is depleted.

TREATED LUMBER (SYP)

The market is mixed. Treaters are busy in the South, while others in the mid-Atlantic and North are a quieter. We are not experiencing any major problems getting loads delivered in a timely manner.

PLYWOOD

7/16 OSB North Central



Pricing in this table is from mill to wholesale does not reflect local market pricing.

OREIENTED STRAND BOARD (OSB)

OSB remains extremely tight across all zones. Most mills are off the market. Late shipments remain an issue. Expect tightness of supply to remain an ongoing issue.

SOUTHEN YELLOW PINE (SYP) PLYWOOD

The market remains strong and demand steady. Specialty items are still in tight supply.

DOUGLAS FIR (DF) PLYWOOD

The market remains strong. Please note that 3/4" and 3/4" T&G UL remain the hot ticket items with limited availability.