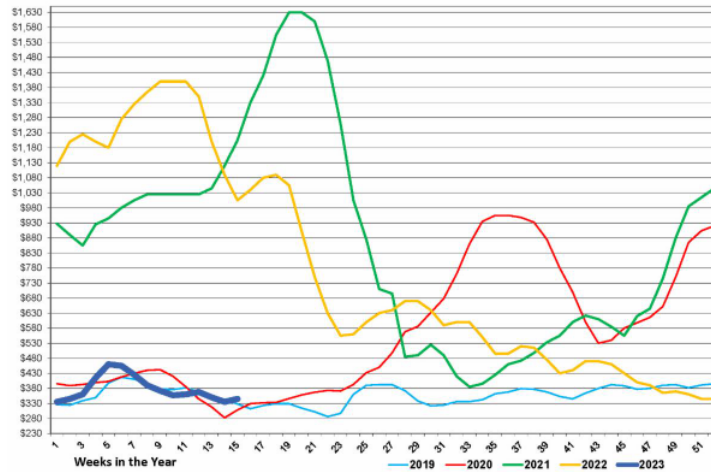




MARKET UPDATE - WEEK OF 4-17-2023

DIMENSIONAL LUMBER

2X4 #2 Western Spruce



Pricing in this table is from mill to wholesale does not reflect local market pricing.

SPF

Car supply is not great this week due to a derailment in Alberta. Getting better service is expected in the upcoming week. 2x4 and 2x6 #2 were flat this week.

DOUGLAS FIR (DF)

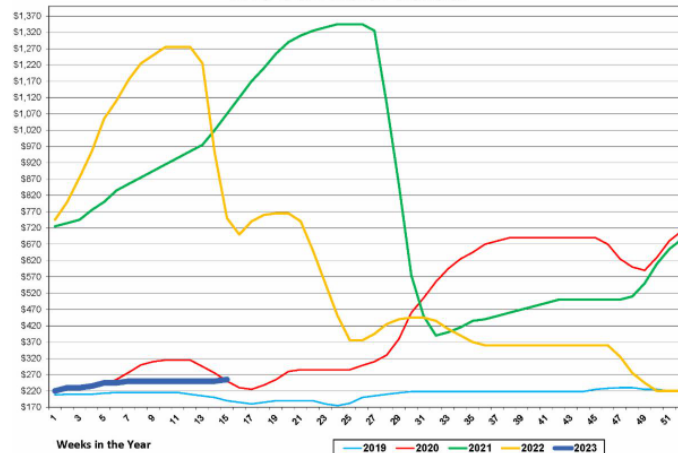
There wasn't a lot of change in the dry fir dimension market to start this week. Prices basically remain unchanged.

TREATED LUMBER (SYP)

Treated prices are expected to start slipping somewhat over the short term. Decking is still struggling to make some headway; this week should see flat to off.

PLYWOOD

7/16 OSB North Central



Pricing in this table is from mill to wholesale does not reflect local market pricing.

OREINTED STRAND BOARD (OSB)

A muted tone was felt early in the panels market.

SOUTHEN YELLOW PINE (SYP) PLYWOOD

There has been seven weeks of sideways pricing across all regions for rated sheathing, and current levels have held securely since February 27 and have been consistently flat.

DOUGLAS FIR (DF) PLYWOOD

The market has turned upward after several weeks of declines. Boise announced it is taking a mill down the week of May 1st for scheduled mill maintenance. Steady sales, warmer weather, and reduced production will likely increase prices.